

Figure 9-1

# Stormwater Facilities

Comprehensive Master Plan Update  
**University of Central Florida**  
 Orlando, Florida  
 2015-2025

**LEGEND:**

- = BOUNDARY LINE
- = DRAINAGE DIVIDES
- = DRAINAGE BASIN DIVIDES
- = DRAINAGE SUB-BASIN DIVIDES
- = SUB-BASIN IDENTIFICATION/AREA
- = BASIN IDENTIFICATION/AREA
- = DIRECTION OF SURFACE FLOW
- = PROPOSED POND LOCATIONS
- = EXIST. STORMWATER STRUCTURES/CULVERTS.
- = PROP. STORMWATER STRUCTURES/CULVERTS.
- = F.E.M.A. 100 YR. FLOOD LINE
- = CALCULATED 100 YR. FLOOD LINE



All maps are diagrammatic and conceptual. The various areas shown are approximate and not to survey accuracy. The intent of these maps is to illustrate general areas of existing or potential use.



This map has been withheld for security reasons.

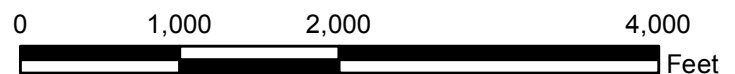
Figure 9-2

## Potable Water Facilities

Comprehensive Master Plan Update  
**University of Central Florida**  
Orlando, Florida  
2015-2025



All maps are diagrammatic and conceptual. The various areas shown are approximate and not to survey accuracy. The intent of these maps is to illustrate general areas of existing or potential use.



Rev. 20140701



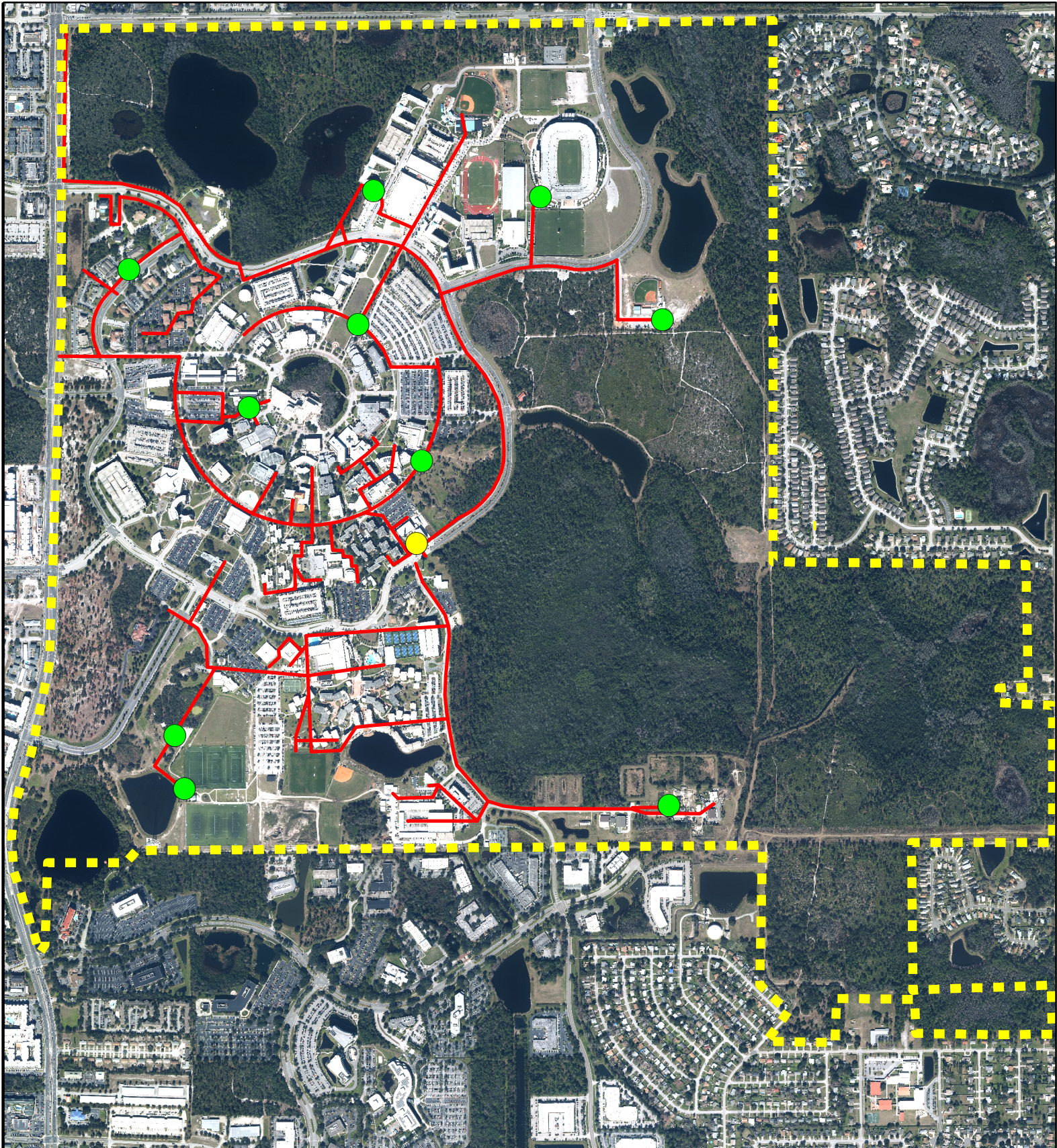


Figure 9-3

# Sanitary Sewer Facilities

Comprehensive Master Plan Update  
**University of Central Florida**  
 Orlando, Florida  
 2015-2025

## Legend

- Existing Sanitary Sewer Line
- Lift Station
- Master Lift Station
- Boundary



All maps are diagrammatic and conceptual. The various areas shown are approximate and not to survey accuracy. The intent of these maps is to illustrate general areas of existing or potential use.

